

# Price List

Effective from 1<sup>st</sup> August 2021

# TEMPERATURE CONTROLLERS

HSN Code: 9032

## Basic Temperature Controller - Series PR 43



Series: PR43  
Size: 48 x 48 mm  
Supply: 110 - 240 VAC/DC



Series: PR43  
Size: 96 x 96 mm  
Supply: 110 - 240 VAC/DC

CAT NO	Control Action		Output Configuration			MRP (₹)
	Basic PID	On-Off	Relay	SSR (12 VDC, 24mA)	Alarm Relay	
<b>Series: PR43   Size: 48 x 48 mm</b>						
151H11B	-	✓	-	1	-	1820
151G11B	-	✓	1 C/O (5A)	-	-	1875
151F11B	-	✓	1 C/O (10A)	-	-	1925
151H12B	✓	✓	-	1	-	2120
151G12B	✓	✓	1 C/O (5A)	-	-	1980
151F12B	✓	✓	1 C/O (10A)	-	-	2235
<b>Series: PR43   Size: 96 x 96 mm</b>						
151N42B	✓	✓	1 C/O (10A)	1	-	2455
151M42B	✓	✓	1 C/O (10A)	1	1 C/O (5A)	2785

Note: For 96x96 Series PR43, Control Output is User selectable between Relay & SSR

## Temperature Control Relays

HSN Code: 9032



PT-100  
Temperature  
Control Relay



Temperature Control  
Relay with inbuilt  
Temperature Sensor

CAT NO	Supply	Temperature Range	Relay Output	Analog Output		Mount	MRP (₹)
				Measured Point	Set Point		
<b>PT-100 Temperature Control Relay</b>							
47A3D412	24 - 240 VAC/DC	-50°C to 300°C	1 C/O (10A)	0 - 10 VDC	0 - 10 VDC	DIN	2015
CAT NO	Supply	Temperature Range	Relay Output	Number of Set Points		Mount	MRP (₹)
				Single	Double		
<b>Temperature Control Relay with inbuilt Temperature Sensor</b>							
41A111AR	110-240 VAC	-10°C to 55°C	NO (5A) & NC (3A)	-	✓	DIN	1240
41A111BR	110-240 VAC	-5°C to 55°C	NO (5A) & NC (3A)	✓	-	DIN	

# TEMPERATURE CONTROLLERS

HSN Code: 9032

## Advanced PID Temperature Controller - Series PR 69



Series: PR69  
Size: 48 x 48 mm  
Supply: 110 - 240  
VAC/DC



Series: PR69  
Size: 96 x 96 mm  
Supply: 110 - 240  
VAC/DC

CAT NO	Control Action		Analog Input (0-5V, 1-5V, 0-10V/4-20mA)	Output Configuration			RS485 Communica- tion	MRP (₹)
	Basic PID	Advanced PID		Relay	Analog Output (0-10V / 4-20mA)	SSR (12 VDC, 24mA)		
<b>Series: PR69   Size: 48 x 48 mm</b>								
151A12B	✓	-	-	2 NO (5A each)	-	1	-	2705
151B12B	✓	-	-	1 NO (5A)	1	1	-	2835
151C12B	✓	-	-	2 NO (5A each)	1	-	-	2835
151D12B	✓	-	-	3 NO (5A each)	-	-	-	2835
151E12B	✓	-	-	1 C/O (10A)	-	1	-	2625
151A13B	✓	✓	-	2 NO (5A each)	-	1	-	3630
151B13B	✓	✓	-	1 NO (5A)	1	1	-	3630
151C13B	✓	✓	-	2 NO (5A each)	1	-	-	3630
151D13B	✓	✓	-	3 NO (5A each)	-	-	-	3630
151A13B1	✓	✓	-	2 NO (5A each)	-	1	✓	4085
151B13B1	✓	✓	-	1 NO (5A)	1	1	✓	4085
151C13B1	✓	✓	-	2 NO (5A each)	1	-	✓	4160
151D13B1	✓	✓	-	3 NO (5A each)	-	-	✓	4160
<b>Series: PR69   Size: 96 x 96 mm</b>								
151L42B	✓	-	-	1 C/O (10A) & 1 NO (5A)	-	1	-	3180
151F42B	✓	-	✓	2 NO (5A each)	-	1	-	4150
151G42B	✓	-	✓	1 NO (5A)	1	1	-	4150
151H42B	✓	-	✓	2 NO (5A each)	1	-	-	4150
151J42B	✓	-	✓	3 NO (5A each)	-	-	-	4150
151K42B	✓	-	✓	1 C/O (10A)	-	1	-	4150
151F43B	✓	✓	✓	2 NO (5A each)	-	1	-	4725
151G43B	✓	✓	✓	1 NO (5A)	1	1	-	4915
151H43B	✓	✓	✓	2 NO (5A each)	1	-	-	4915
151J43B	✓	✓	✓	3 NO (5A each)	-	-	-	4915
151F43B1	✓	✓	✓	2 NO (5A each)	-	1	✓	5900
151G43B1	✓	✓	✓	1 NO (5A)	1	1	✓	5900
151H43B1	✓	✓	✓	2 NO (5A each)	1	-	✓	5900
151J43B1	✓	✓	✓	3 NO (5A each)	-	-	✓	5900

# PROGRAMMABLE LOGIC CONTROLLERS

HSN Code: 9032

## Mini PLC PL-100



Mini PLC PL-100  
Supports up to 112 I/Os  
Supply: 24 VDC

CAT NO	Inputs			Outputs					MRP (₹)
	Digital Inputs	High Speed Inputs	Analog Inputs	Relay Outputs	Transistor Low Side	Transistor High Side	High Speed Outputs	Analog Outputs	
<b>Base Modules</b>									
PC10BD16001D1	8	-	-	8 NO (5A each)	-	-	-	-	8830
PC10BD14002D1	8 or (6)	2 (10 kHz max)	-	-	4 (10 Hz)	-	2 (25 kHz max)	-	10510
PC10BD14003D1	8 or (4)	4 (10 kHz max)	-	-	4 (10 Hz)	-	2 (25 kHz max)	-	12610
<b>Extension Modules</b>									
PC10ED08001N	8	-	-	-	-	-	-	-	2485
PC10ED16003N	8	-	-	8 NO (5A each)	-	-	-	-	5045
PC10ED08002N	-	-	-	8 NO (5A each)	-	-	-	-	3370
PC10ED08005N	-	-	-	-	-	8 (10 Hz)	-	-	4730
PC10ED08004N	-	-	-	-	8 (10 Hz)	-	-	-	3310
PC10EA04001N	-	-	4 (0-10V / 4-20mA)	-	-	-	-	-	5780
PC10EA02002N	-	-	-	-	-	-	-	2(0-10V / 4-20mA)	5255
<b>Accessories</b>									
40B2BBVAA	GSM Alarm Modem								6305
28D33B0	Programming Cable, USB 2.0 Cable, Type A Male to B Male								375
PC10AC2	RS232 Communication Cable, PL-100 to HMI / SCADA (DB9 Female to RJ-11)							935	
PC10AC3	RS485 Communication Cable, PL-100 to HMI / SCADA (DB9 Female to RJ-11)								
PC10AC4	RS485 Communication Cable, PL-100 to HMI / SCADA (DB9 Male to RJ-11)								
PC10SN000N	PL-SOFT, Windows based software for PL-100								1160

# PROGRAMMABLE LOGIC CONTROLLERS & SIGNAL TRANSDUCERS

HSN Code: 9032

Smart Relay *Genie™-NX*



Series: Smart Relay  
*Genie™-NX*  
Supports up to 48  
I/Os



Series: Signal Transducers  
Supply: 24 VDC

CAT NO	Supply Voltage			Inputs		Outputs	MRP (₹)
	110-240 VAC	12-24 VDC	24 VAC/DC	Digital Inputs	Analog Inputs	Relay Outputs	
<b>Base Modules With LCD Display</b>							
G7DDT11	✓	-	-	8		4 NO (8A each)	6250
G8DDT11	-	✓	-	8 or (6)	(2)	4 NO (8A each)	
G9DDT11	-	-	✓	8		4 NO (8A each)	
G9ADT11	-	-	✓	8 or (6)	(2)	4 NO (8A each)	
<b>Base Modules Without LCD Display</b>							
G7DDT11B	✓	-	-	8		4 NO (8A each)	5685
G8DDT11B	-	✓	-	8 or (6)	(2)	4 NO (8A each)	
G9DDT11B	-	-	✓	8		4 NO (8A each)	
G9ADT11B	-	-	✓	8 or (6)	(2)	4 NO (8A each)	
<b>Extension Modules</b>							
G7DDT10E	✓	-	-	8		4 NO (8A each)	3860
G8DDT10E	-	✓	-	8 or (6)	(2)	4 NO (8A each)	
G9DDT10E	-	-	✓	8		4 NO (8A each)	
G9ADT10E	-	-	✓	8 or (6)	(2)	4 NO (8A each)	
<b>Nx-Comm RS485 Communication Module</b>							
G7XDTR4	✓	-	-	-	-	-	1490
G8XDTR4	-	✓	-	-	-	-	
<b>Accessories</b>							
GFDNN1	Programming Cable						1655
GFDNN2S	RS 232 Serial Communication Cable						2205
GFDNN3M	Memory Card						545
GNXNN2	G-Soft NX, Windows based Software for Genie NX						675

CAT NO	Input Signal	Output Signal	MRP (₹)
<b>Signal Transducer - 1 Input &amp; 1 Output   Supply: 24 VDC   3 Port Isolation, Din Mount</b>			
2SC3D11CC3	0-10V DC, 2-10V DC, 0-20mA DC, 4-20mA DC	0-10V DC 2-10V DC 0-20mA DC 4-20mA DC	1905
2SC3D11DC3	0-5 V DC, 1-5 V DC, 0-20mA DC, 4-20mA DC		
2SC3D11EC3	0-10V DC, 2-10V DC, 0-10mA DC, 2-10mA DC		

## SWITCHED MODE POWER SUPPLY - SMPS

HSN Code: 8504



Series: Switched Mode Power Supply

CAT NO	Power	Input Voltage		Output Voltage				Output	Size	MRP (₹)
	Watt	230 VAC	110-240 VAC	24 VDC	12 VDC	10 VDC	5 VDC	Current		
<b>Switched Mode Power Supply - SMPS</b>										
24AS244D6D	96 W	✓	-	✓	-	-	-	4 A	6M	2500
24AS126D6D	72 W	✓	-	-	✓	-	-	6 A	6M	2440
24BS24AD4E	60 W	✓	✓	✓	-	-	-	2.5 A	4M	1930
24BS241D2F	24 W	✓	✓	✓	-	-	-	1 A	2M	1510
24BS24BD1F	12 W	✓	✓	✓	-	-	-	0.5 A	1M	1410
24BS121D2F	12 W	✓	✓	-	✓	-	-	1 A	2M	
24BS101D2F	10 W	✓	✓	-	-	✓	-	1 A	2M	1355
24BS051D1F	5 W	✓	✓	-	-	-	✓	1 A	1M	1100

## GATEWAY & INTERFACE CONVERTERS

HSN Code: 8517



Lynx+ Gateway



RS232 to RS485 / RS422 Converter



USB to RS232 / RS485 / RS422 Converter

CAT NO	Product Description	MRP (₹)
<b>Lynx+ Gateway</b>		
25A11A0	12 - 24 VDC, Protocol Converter, Modbus TCP - Modbus RTU / ASCII	11460
25B11A0	12 - 24 VDC, Serial to Ethernet Converter	8705
<b>RS 232 to RS485 / RS422 Converter</b>		
28B21A0	RS232 to RS485 / RS422 Converter	3185
28E34B0	Cable DB 9 Female to DB 9 Male Converter	640
<b>USB to RS232 / RS485 / RS422 Converter</b>		
28A11A0	USB to RS232 / RS485 / RS422 Converter	3715
28D33B0	Accessory, USB 2.0 Cable, Type A Male to B Male	375
28NNN10	Software CD	300

# ALARM ANNUNCIATORS

HSN Code: 8531

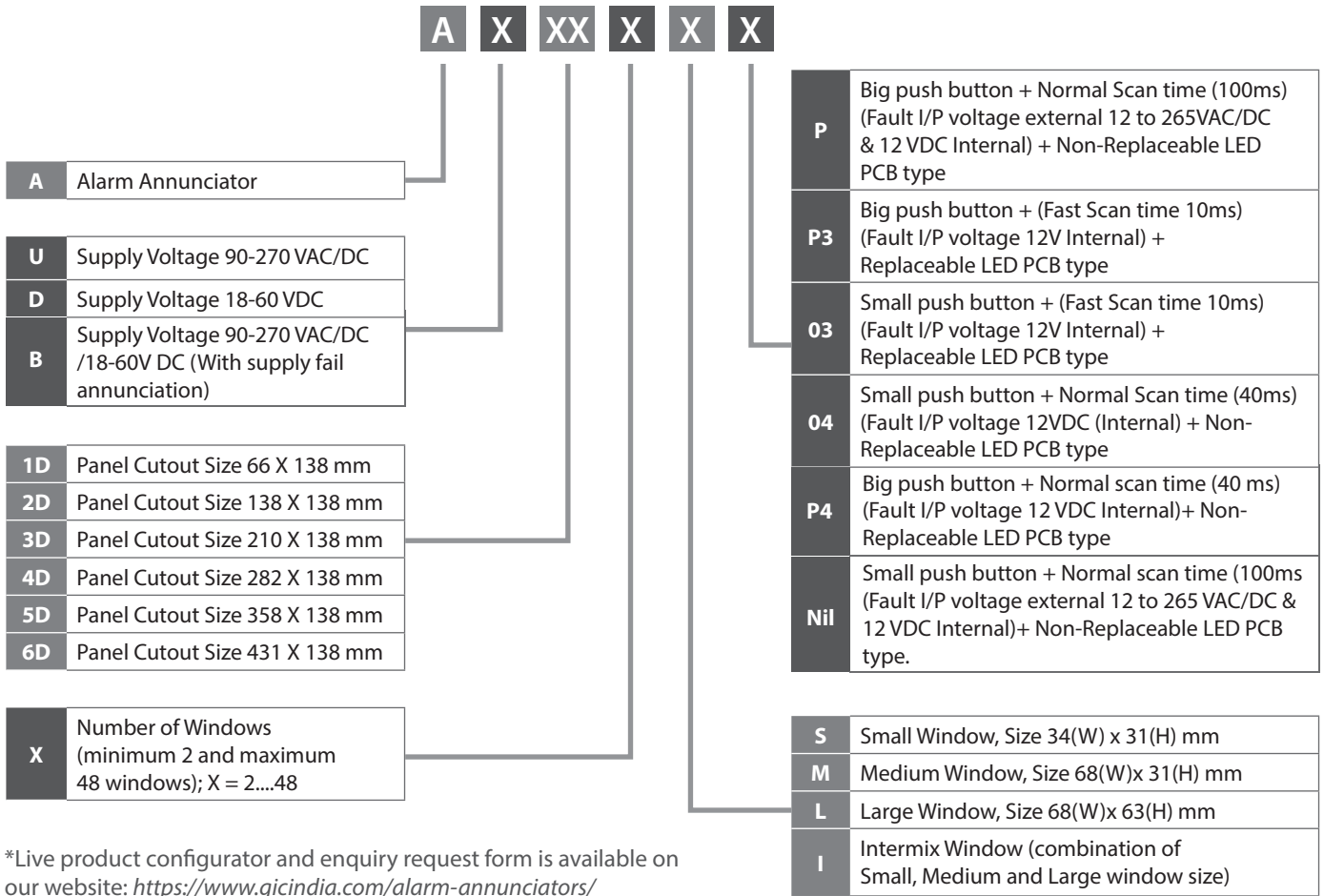


CAT NO	Supply		Product Size	Number of windows	Window size	Keys	RS485 Communication	Supply Fail Annunciation	MRP (₹)
	90-270 VAC/DC	18-60 VDC							
AU1D8S	✓	-	1D	8	Small	Small	✓	-	8610
AU1D6SP	✓	-	1D	6	Small	Big	✓	-	
AD1D8S	-	✓	1D	8	Small	Small	✓	-	
AD1D6SP	-	✓	1D	6	Small	Big	✓	-	
AU2D16S	✓	-	2D	16	Small	Small	✓	-	14700
AU2D14SP	✓	-	2D	14	Small	Big	✓	-	
AD2D16S	-	✓	2D	16	Small	Small	✓	-	
AD2D14SP	-	✓	2D	14	Small	Big	✓	-	
AB2D16S04	✓	✓	2D	16	Small	Small	✓	✓	16750
AB2D14SP4	✓	✓	2D	14	Small	Big	✓	✓	
AU3D24S	✓	-	3D	24	Small	Small	✓	-	22050
AU3D22SP	✓	-	3D	22	Small	Big	✓	-	
AD3D24S	-	✓	3D	24	Small	Small	✓	-	
AD3D22SP	-	✓	3D	22	Small	Big	✓	-	
AB3D24S04	✓	✓	3D	24	Small	Small	✓	✓	24100
AB3D22SP4	✓	✓	3D	22	Small	Big	✓	✓	
AU4D32S	✓	-	4D	32	Small	Small	✓	-	29400
AU4D30SP	✓	-	4D	30	Small	Big	✓	-	
AD4D32S	-	✓	4D	32	Small	Small	✓	-	
AD4D30SP	-	✓	4D	30	Small	Big	✓	-	
AB4D32S04	✓	✓	4D	32	Small	Small	✓	✓	31500
AB4D30SP4	✓	✓	4D	30	Small	Big	✓	✓	
AU5D40S	✓	-	5D	40	Small	Small	✓	-	36750
AU5D38SP	✓	-	5D	38	Small	Big	✓	-	
AD5D40S	-	✓	5D	40	Small	Small	✓	-	
AD5D38SP	-	✓	5D	38	Small	Big	✓	-	
AU6D48S	✓	-	6D	48	Small	Small	✓	-	44100
AU6D46SP	✓	-	6D	46	Small	Big	✓	-	
AD6D48S	-	✓	6D	48	Small	Small	✓	-	
AD6D46SP	-	✓	6D	46	Small	Big	✓	-	



# ALARM ANNUNCIATORS

## Product Ordering Code:



\*Live product configurator and enquiry request form is available on our website: <https://www.gicindia.com/alarm-annunciators/>

# PROGRAMMABLE DIGITAL TIMER *Eliso*<sup>®</sup>

HSN Code: 9107



**Programmable Digital Timer *Eliso*<sup>®</sup> with Inbuilt 35 Function Modes**  
Size: 48 x 48 mm

CAT NO	Product Description	MRP (₹)
<b>Programmable Digital Timer</b>		
V7DFTS3	110 - 240 VAC, Multi Function Digital Timer - Eliro, 2 C/O - NO(5A) & NC(3A), Panel / Flush Mount	2005
V7DDSS3	110 - 240 VAC, Multi Function Digital Timer - Eliro, 2 C/O - NO(5A) & NC(3A), Base / DIN Mount with 11 pin	

Note: Now available with *forward - pause - reverse* function mode.



## LIQUID LEVEL CONTROLLER

HSN Code: 9032



Liquid Level Controller

CAT NO	Supply			Draining & Filling	Sensitivity (1K to 200 K)	Relay Output	Mount	MRP (₹)
	110VAC	240VAC	400VAC					
<b>Liquid Level Controller</b>								
4411AD1	✓	-	-	✓	✓	1 C/O (8A)	DIN	1405
4421AD1	-	✓	-	✓	✓	1 C/O (8A)	DIN	
4431AD1	-	-	✓	✓	✓	1 C/O (8A)	DIN	
<b>Sensor for Liquid Level Controller</b>								
44S0003	Accessories, Set of 3 Stainless Steel Sensors, 65°C							480
44S0006	Accessories, Set of 6 Stainless Steel Sensors, 65°C							840
44S0013	Accessories, Set of 3 Stainless Steel Sensors, 165°C							
44S0016	Accessories, Set of 6 Stainless Steel Sensors, 165°C							1485

## RELAY MODULES

HSN Code: 8536



Isolated Relay Output Modules

CAT NO	Supply	Relay Output	Size	MRP (₹)
	110-240 VAC			
<b>Isolated Relay Output Modules</b>				
IRLA01S	✓	1 C/O (8A)	1M	885
IRLA02S	✓	2 C/O (8A)	2M	1325
IRLA04S	✓	4 C/O (8A)	4M	1985
IRLA08S	✓	8 C/O (8A)	6M	2430

# HOUR METER, RATE INDICATOR & COUNTERS

HSN Code: 9029



Digital Hour Meter / Counter,  
Rate Indicator & Totaliser

CAT NO	Supply		Product Description	Output		MRP (₹)
	9-30 VDC	110-240 VAC/DC		Relay	MOSFET	
<b>Digital Hour Meter / Counter, Rate Indicator &amp; Totaliser</b>						
Z2221N0G2FT00	-	✓	Digital Hour Meter / Counter	1 NO (5A)		1475
Z2301N0G1FT00	✓	-	Digital Hour Meter / Counter		2 (30VDC, 60mA)	
Z1222N0G0FT00	-	✓	Non-Resetable Digital Hour Meter with Terminal Reset	1 NO (5A)		2735
Z3301N0G2FT00	✓	-	Rate Indicator / Totaliser	1 NO (5A)		



Hour Meter - HR 26

CAT NO	Product Description	MRP (₹)
<b>Hour Meter - HR 26</b>		
34A51A-385	415 VAC, Resetable Hour Meter with 2-way terminal strip	710
34A21A-385	240 VAC, Resetable Hour Meter with 2-way terminal strip	
35A51A-385	415 VAC, Non Resetable Hour Meter with 2-way terminal strip	
35A21A-385	240 VAC, Non Resetable Hour Meter with 2-way terminal strip	



Impulse Counter - CR 18

CAT NO	Product Description	MRP (₹)
<b>Impulse Counter - CR 18</b>		
ED24C-30	24 VDC, 7 Digit, Non Resetable Impulse Counter	485
ED14C	12 VDC, 7 Digit, Snap In Panel Mount	
ED22D	24 VDC, 7 Digit, Pin Mount (pcb)	
ED23D	24 VDC, 7 Digit, Pin Mount Right Angle	
ED24C	24 VDC, 7 Digit, Snap In Panel Mount	

# IMPULSE COUNTERS

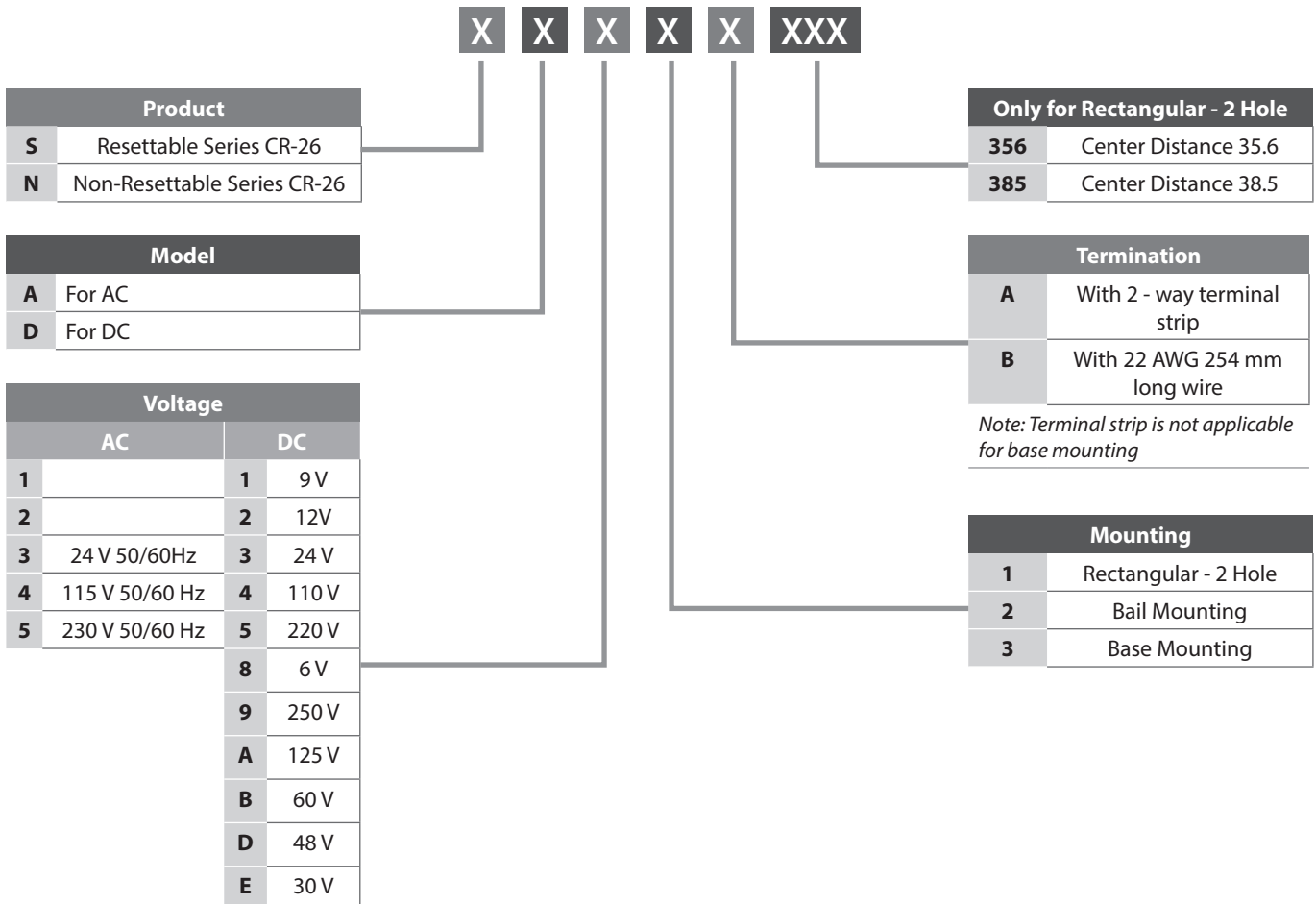
HSN Code: 9029

## Impulse Counter Series CR 26



6 digit - Resettable & Non-Resettable Impulse Counters

CAT NO	Product Description	MRP (₹)
<b>Impulse Counter - CR 26</b>		
AC Model		710
DC Model		635



# IMPULSE COUNTERS

HSN Code: 9029

## Impulse Counter Series CR 26



6 digit - Non-Resettable Impulse Counters

CAT NO	Product Description	MRP (₹)
<b>Impulse Counter - CR 26</b>		
AC Model		710
DC Model		635

Model	
<b>A</b>	For AC
<b>D</b>	For DC

Voltage		
	AC	DC
<b>1</b>		<b>1</b> 9V
<b>2</b>		<b>2</b> 12V
<b>3</b>	24 V 50/60Hz	<b>3</b> 24 V
<b>4</b>	115 V 50/60 Hz	<b>4</b> 110 V
<b>5</b>	230 V 50/60 Hz	<b>5</b> 220 V
		<b>8</b> 6V
		<b>9</b> 250 V
		<b>A</b> 125 V

**6 N X X X X - X**

Blank Counter Set at 999800	
<b>A</b>	Counter Set at 000000
<b>B</b>	Counter Set at 999980
<b>C</b>	24" Lead Wires
<b>D</b>	Diode Suppression
<b>E</b>	16" Lead Wires

Termination	
<b>A</b>	With 2 - way terminal strip
<b>B</b>	With 22 AWG 254 mm long wire

*Note: Terminal strip is not applicable for base mounting*

Mounting	
<b>1</b>	Panel Mount
<b>2</b>	Bail Mount
<b>3</b>	Horizontal Base Mount
<b>4</b>	Vertical Base Mount
<b>B</b>	Behind Panel

Note:

- HSN code signifies below:  
(HSN code): 18%\* GST  
\*Subject to change as per Govt. notification
- Prices are subject to change without prior notice.

## PROCESS INDICATORS

HSN Code: 9030



Process Indicator  
With Inbuilt Hourmeter

CAT.NO.	Input		24 V DC Sensor Supply	Supply Voltage		RS485	Alarm Outputs	White Display	MRP (₹)
	Sensor Input TC / RTD	Analog Input 0-10VDC / 4-20mA		180-270V	85-270 VAC/ DC				
PIA200	-	✓	-	✓	-	-	-	-	1705
PIT200	✓	-	-	✓	-	-	-	-	1815
PIB110	✓	✓	✓	-	✓	-	-	-	2750
PIB120	✓	✓	✓	-	✓	-	✓	-	5170
PIB12C	✓	✓	✓	-	✓	✓	✓	-	5390
PIA200W	-	✓	-	✓	-	-	-	✓	1775
PIT200W	✓	-	-	✓	-	-	-	✓	1885
PIB110W	✓	✓	✓	-	✓	-	-	✓	2820
PIB120W	✓	✓	✓	-	✓	-	✓	✓	5240
PIB12CW	✓	✓	✓	-	✓	✓	✓	✓	5460

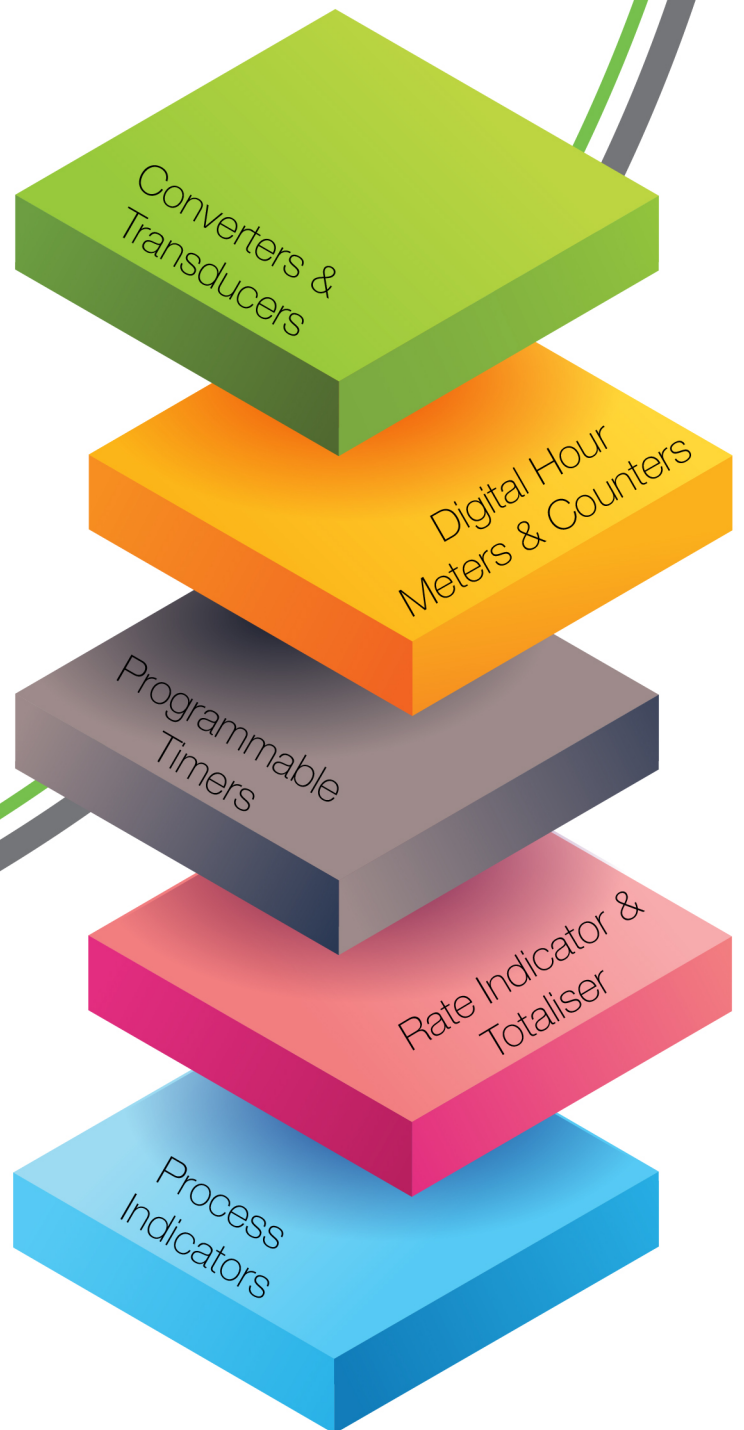
## SLIM RELAY MODULES

HSN Code: 8536



Slim Relay  
Output Modules

CAT.NO.	Supply	Relay Output	Size	Standard Pack	MRP (₹)
<b>Slim Relay Output Modules</b>					
SR24D61RM	24 VDC	1C/O (6A)	6.2 mm	10 units	395
SR24U61RM	24 VAC/DC	1C/O (6A)	6.2 mm	10 units	465
SR120U61RM	120 VAC/DC	1C/O (6A)	6.2 mm	10 units	475
SR230A61RM	230 VAC	1C/O (6A)	6.2 mm	10 units	555
SR230U61RM	230 VAC/DC	1C/O (6A)	6.2 mm	10 units	585



**General Industrial Controls Private Limited**

T-107 & T-114, M.I.D.C., Bhosari, Pune 411026, INDIA.

+91(0)20 4623 2323    info@gicindia.com    www.gicindia.com